



GROWING TOGETHER

PORT TIRES

INDUSTRIAL TIRES |





GROWING TOGETHER

INDUSTRIAL TIRES

PORT

BKT has successfully coped with the needs in logistics and port handling applications by designing tires that are able to operate on insidious terrain as well as on rough cemented surfaces where heavy loads needs to be lifted at maximum safety. BKT tires have been designed in order to withstand the requirements of today's applications and modern equipment, providing better stability, traction and safety thanks to the special tread design and the reinforced sidewalls. In short, a wide range of extraordinarily safe tires protecting operators on their job and improving considerably productivity!



Radial

Radial tires have steel cords that are arranged running radially from bead to bead around the tire. Sidewall and tread have independent functional features providing more flexibility, great performance, durability, and fuel economy.



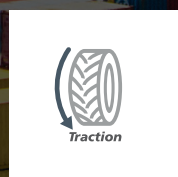
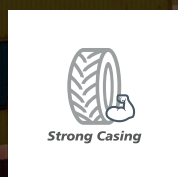
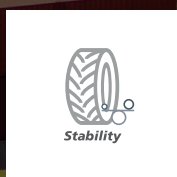
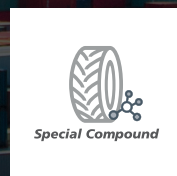
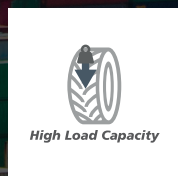
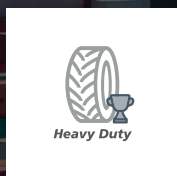
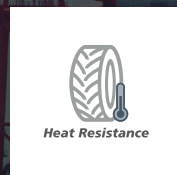
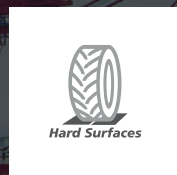
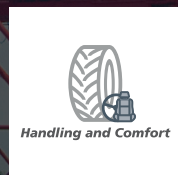
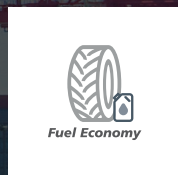
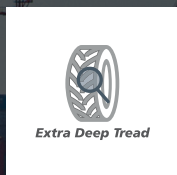
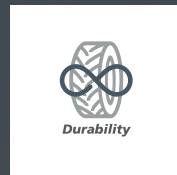
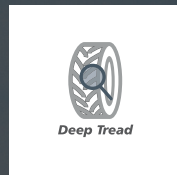
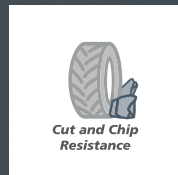
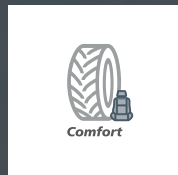
Bias

Bias tires have cord plies that are arranged running diagonally from bead to bead across the tire. Layers overlap forming a crisscross pattern. This design features extraordinary sidewall resistance and puncture resistance.



RT TIRES

TECHNOLOGIES AND PERFORMANCE



PORT TIRES



XL GRIP IND3 (RTG)



[p. 6]



ROCK GRIP IND4 (ECH)



[p. 7]



ROCK GRIP IND4 (RS)



[p. 8]



SM 54 IND-4S



[p. 9]



SM 54 M IND-4S



[p. 10]



SM 55 IND-5S



[p. 11]



POWER TRAX HD



[p. 12]



POWER TRAX HD SMOOTH



[p. 13]



EM 937 IND3 (ECH)



[p. 14]



XL GRIP IND3 (ECH)



[p. 15]



CONTAINER KING



[p. 16]



PORT KING PLUS



[p. 17]



PORT KING CLASSIC



[p. 18]



PORTMAX PM 90



[p. 19]



PORTMAX PM 93 PLUS



[p. 20]



PORTMAX PT 93



[p. 21]



ROCK STAR IND4



[p. 22]



LIFTMAX LM SMOOTH



[p. 23]



POWER TRAX



[p. 24]



MULTIMAX SR 261



[p. 25]



Bias



XL GRIP IND3 (RTG)

XL GRIP (IND-3) is a bias-ply tire for RTG cranes in stacking and lifting applications. The tire features a strong casing made of a specially formulated tread compound, which provides an extended tire life-cycle.

Technologies



Heavy Duty

Performance



Cut and Chip Resistance



Durability



Hard Surfaces



Stability



	Tire size	Type	PR	LI/SS	Version	O.W. (mm)	O.D. (mm)	SLR (mm)	RC (mm)	RIM	
										Rec.	Alt.
Ø 25"	16.00 - 25	TL	32	-	IND	465	1485	682	4395	11.25/2.0	13.00/2.0
	18.00 - 25	TL	40	-	IND	510	1615	739	4780	13.00/2.5	15.00/2.5
	18.00 - 25	TL	32	-	IND	510	1615	739	4780	13.00/2.5	15.00/2.5
	21.00 - 25	TL	32	-	IND	576	1750	789	5185	15.00/3.0	17.00/3.0
	21.00 - 25	TL	36	-	IND	576	1750	789	5185	15.00/3.0	17.00/3.0
	21.00 - 25	TL	40	-	IND	576	1750	789	5185	15.00/3.0	17.00/3.0
	21.00 - 25	TL	44	-	IND	576	1750	789	5185	15.00/3.0	17.00/3.0
Ø 29"	24.00 - 29	TL	42	-	IND	656	1994	900	5860	17.00/3.5	-
Ø 35"	21.00 - 35	TL	36	-	IND	580	2020	928	5980	15.00/3.0	-
	21.00 - 35	TL	40	-	IND	580	2020	928	5980	15.00/3.0	-
	24.00 - 35	TL	48	-	IND	655	2130	975	6302	17.00/3.5	-

IND: Industrial



ROCK GRIP IND4 (ECH)

ROCK GRIP PORT INDUSTRIAL IND-4 (ECH) is a bias-ply tire designed for Empty container handler in several applications including industrial handling and steelworks. The special ROCK GRIP compound ensure particular heat resistance along with great stability and durability.



	Tire size	Type	PR	LI/SS	Version	O.W. (mm)	O.D. (mm)	SLR (mm)	RC (mm)	RIM	
										Rec.	Alt.
Ø 24"	12.00 - 24	TT	20	-	PORT IND	315	1265	595	3755	8.5	8.0
	12.00 - 24	TT	24	-	PORT IND	315	1265	595	3755	8.5	8.0
	14.00 - 24	TL	28	-	PORT IND	375	1410	647	4173	10.00 WA	10.00 VA
	14.00 - 24	TL	32	-	PORT IND	375	1410	647	4173	10.00 WA	10.00 VA
	14.00 - 24	TL	24	-	PORT IND	375	1410	647	4173	10.00 W	-
	14.00 - 24	TL	28	-	PORT IND	375	1410	647	4173	10.00 W	-
	14.00 - 24	TL	32	-	PORT IND	375	1410	647	4173	10.00 W	-
Ø 25"	16.00 - 25	TL	32	-	PORT IND	470	1525	699	4514	11.25/2.0	13.00/2.0
	16.00 - 25	TL	36	-	PORT IND	470	1525	699	4514	11.25/2.0	13.00/2.0

PORT IND: Port Industrial

Technologies



Special Compound

Performance



Durability



Heat Resistance



Stability





Bias



ROCK GRIP IND4 (RS)

ROCK GRIP IND4 (RS) is a bias-ply tire designed for reach stackers in several applications including industrial handling and steelworks. In airport hubs ROCK GRIP IND4 (RS) can be employed also for push back tractors. The special ROCK GRIP compound ensures particular heat resistance along with great stability and durability.

Technologies



Special Compound

Performance



Durability



Heat Resistance



Stability



	Tire size	Type	PR	LI/SS	Version	O.W. (mm)	O.D. (mm)	SLR (mm)	RC (mm)	RIM	
										Rec.	Alt.
Ø 25"	18.00 - 25	TL	40	-	PORT IND	510	1650	753	4885	13.00/2.5	15.00/2.5
Ø 33"	18.00 - 33	TL	36	-	PORT IND	510	1887	869	5586	13.00/2.5	-
	18.00 - 33	TL	40	-	PORT IND	510	1887	869	5586	13.00/2.5	-
	18.00 - 33	TL	44	-	PORT IND	510	1887	869	5586	13.00/2.5	-

PORT IND: Port Industrial





SM 54 IND-4S

SM 54 (L-4S) IND-4S has been specially designed for empty container handlers and reach stackers in intermodal/logistics applications. It features high stability in lift mode as well as a deep and smooth tread design, providing excellent cut resistance to ensure an extended tire life-cycle.

	Tire size	Type	PR	LI/SS	Version	O.W. (mm)	O.D. (mm)	SLR (mm)	RC (mm)	RIM	
										Rec.	Alt.
Ø 25"	16.00 - 25	TL	28	-	IND	430	1470	676	4354	11.25/2.0	13.00/2.0
	16.00 - 25	TL	32	-	IND	430	1470	676	4354	11.25/2.0	13.00/2.0

IND: Industrial



Bias



Technologies



Heavy Duty

Performance



Cut and Chip Resistance



Durability



Hard Surfaces



Stability





Bias



SM 54 M IND-4S

SM 54 M (L-4S) IND-4S is a modified version of the SM 54 pattern. The flatter tread profile results in a large contact area ensuring a longer tire life-cycle. This tire has been specially designed for empty container handlers and reach stackers in intermodal/logistics applications. SM 54 M features high stability in lift mode as well as a deep and smooth tread design, providing excellent cut resistance.

Technologies



Deep Tread

Performance



Cut and Chip Resistance



Durability



Stability



	Tire size	Type	PR	LI/SS	Version	O.W. (mm)	O.D. (mm)	SLR (mm)	RC (mm)	RIM	
										Rec.	Alt.
Ø 25"	18.00 - 25	TL	40	-	PORT IND	528	1650	750	4880	13.00/2.5	15.00/2.5
Ø 33"	18.00 - 33	TL	36	-	PORT IND	535	1895	840	5609	13.00/2.5	-
	18.00 - 33	TL	40	-	PORT IND	535	1895	840	5609	13.00/2.5	-

PORT IND: Port Industrial





SM 55 IND-5S

SM 55 IND-5S has been specially designed for reach stackers and container handlers. Its special abrasion-resistant tread compound provides an extended tire life on asphalt or concrete surfaces and offers excellent stability to vehicles in lift mode.

	Tire size	Type	PR	LI/SS	Version	O.W. (mm)	O.D. (mm)	SLR (mm)	RC (mm)	RIM	
										Rec.	Alt.
Ø 24"	12.00 - 24	TT	20	-	PORT IND	310	1275	594	3777	8.5	7.33 V ; 8 ; 8.00 V ; 8.50 V
Ø 25"	18.00 - 25	TL	40	-	PORT SPL	517	1665	765	5118	13.00/2.5	15.00/2.5

PORT IND: Port Industrial - PORT SPL: Port Special



Bias



Technologies



Extra Deep Tread



Heavy Duty

Performance



Cut and Chip Resistance



Durability



Hard Surfaces



Stability





Bias



A8



173

Technologies



Deep Tread



POWER TRAX HD

POWER TRAX HD premium tire is specially designed for equipment in port and underground mining applications. Its deep tread, the extra thick sidewall and the tough casing provide exceptional durability minimizing the risk of punctures and accidental damages. The tire features excellent cut and chip resistance, which is particularly suitable for rough and hard surfaces. The specially designed rim guard ensures protection against flats and wheel damage in the rim flange area.

	Tire size	Type	PR	LI/SS	Version	S.W. (mm)	O.D. (mm)	SLR (mm)	RC (mm)	RIM	
										Rec.	Alt.
Ø 20"	12.00 - 20	TT	20	172 A8	IMP	320	1150	-	-	8.50	9.0
	12.00 - 20	TT	20	-	STD	320	1150	-	-	8.50	9.0
	12.00 - 20	TT	28	173 A8	IMP	320	1150	-	-	8.50	9.0
	12.00 - 20	TT	28	-	STD	320	1150	-	-	8.50	9.0

STD: Standard - IMP: Implement





POWER TRAX HD SMOOTH

POWER TRAX HD SMOOTH is a bias-ply tire specially designed for port and underground mining operations. The special sidewall protection along with a solid tread prevents cut and puncture damages that are common in such demanding environments. When you need to move heavy-duty loads, POWER TRAX HD SMOOTH is your ideal partner.

	Tire size	Type	PR	LI/SS	Version	S.W. (mm)	O.D. (mm)	SLR (mm)	RC (mm)	RIM	
										Rec.	Alt.
Ø 20"	12.00 - 20	TT	20	-	STD	320	1150	-	-	8.50	9.0
	12.00 - 20	TT	28	-	STD	320	1150	-	-	8.50	9.0

STD: Standard



Bias

Technologies



Heavy Duty



Extra Deep Tread

Performance



Cut and Chip Resistance



Durability



Stability





Bias



EM 937 IND3 (ECH)

EM 937 (E-3) IND is specially designed for empty-container-handling operations in stacking and loading applications. It features excellent durability and a long tire life. EM 937 (E-3) IND is ideal on paved surfaces and for all operations requiring a high level of handling in the port. *For size 14.00-24 please confirm service rim or consult manufacturer/distributor.

Technologies



Heavy Duty

Performance



Cut and Chip Resistance



Durability



Handling and Comfort



Hard Surfaces



Stability



	Tire size	Type	PR	LI/SS	Version	O.W. (mm)	O.D. (mm)	SLR (mm)	RC (mm)	RIM	
										Rec.	Alt.
Ø 24"	14.00 - 24	TT	28	-	PORT IND	375	1368	628	4050	10.00 W	-
	14.00 - 24	TL	28	-	PORT IND	375	1368	628	4050	10.00 W	-
	14.00 - 24	TL	28	-	PORT IND	375	1368	628	4050	10.00 WA	10.00 VA
	14.00 - 24	TT	32	-	PORT IND	375	1368	628	4050	10.00 W	-

PORT IND: Port Industrial





XL GRIP IND3 (ECH)

XL GRIP (IND-3) is a bias-ply tire for empty container handlers in stacking and lifting applications. The tire features a strong casing, which provides great durability and as well as a high stability in lift mode.

	Tire size	Type	PR	LI/SS	Version	O.W. (mm)	O.D. (mm)	SLR (mm)	RC (mm)	RIM	
										Rec.	Alt.
Ø 24"	12.00 - 24	TT	24	-	IND	320	1250	585	3710	8.5	8.0
Ø 25"	16.00 - 25	TL	28	-	IND	465	1485	682	4395	11.25/2.0	13.00/2.0
	18.00 - 25	TL	32	-	PORT IND	510	1615	739	4780	13.00/2.5	15.00/2.5
	18.00 - 25	TL	40	-	PORT IND	510	1615	739	4780	13.00/2.5	15.00/2.5

IND: Industrial - PORT IND: Port Industrial



Bias



Technologies



Heavy Duty

Performance



Cut and Chip Resistance



Durability



Hard Surfaces



Stability





Bias



CONTAINER KING

CONTAINER KING has been designed for reach stackers in intermodal transport and logistics applications. This extraordinary tire is made of a highly wear-and-tear-resistant tread compound which minimizes tread cracks. CONTAINER KING ensures an extended tire life-cycle plus exceptional stability in lift mode.

Performance



Stability



Durability

	Tire size	Type	PR	LI/SS	Version	O.W.	O.D.	SLR	RC	TREAD DEPTH (mm)	RIM	
						(mm)	(mm)	(mm)	(mm)		Rec.	Alt.
Ø 24"	12.00 - 24	TT	24	-	IND	330	1285	-	-	33.5	8.5	8.0
Ø 25"	18.00 - 25	TL	40	-	IND	528	1675	765	4955	67.5	13.00/2.5	15.00/2.5
Ø 33"	18.00 - 33	TL	40	-	IND	510	1895	852	5820	67.5	13.00/2.5	-

IND: Industrial





PORT KING PLUS

PORT KING PLUS has been specially designed for reach stackers in intermodal/logistics applications. Its deep tread with sturdy lugs along with the special compound provides an extended tire life-cycle. It is also available with a Groove Crack Resistant tread Compound (GCRC).

	Tire size	Type	PR	LI/SS	Version	O.W. (mm)	O.D. (mm)	SLR (mm)	RC (mm)	RIM	
										Rec.	Alt.
Ø 25"	18.00 - 25	TL	40	-	GCRC	528	1675	765	4955	13.00/2.5	15.00/2.5

GCRC: Groove Crack Resistant tread Compound



Bias



Technologies



Special Compound



Deep Tread

Performance



Durability





Bias



PORT KING CLASSIC

PORT KING CLASSIC is BKT's latest-generation port tire, which has been specially engineered for container handling equipment. The tire ensures maximum operating efficiency and exceptional stability in lift mode. Thanks to its strong nylon casing, PORT KING CLASSIC stands out for higher load capacity minimizing the risk of impact breaks, snags, and punctures. The new wear-resistant compound has been developed to ensure an extended product life-cycle, and to provide the best return on investment. Thanks to its features PORT KING CLASSIC can be used also on push back tractors in airport hubs.

Technologies



Special Compound

Performance



Durability



High Load Capacity



High Puncture Resistance



Stability



	Tire size	Type	PR	LI/SS	Version	O.W.	O.D.	SLR	RC	RIM	
						(mm)	(mm)	(mm)	(mm)	Rec.	Alt.
Ø 25"	18.00 - 25	TL	40	-	IND	528	1675	765	4955	13.00/2.5	15.00/2.5

IND: Industrial





PORTMAX PM 90

RADIAL PORT TIRES

PORTMAX PM 90 has been specially designed for reach stackers in several applications including industrial handling and steelworks. It is an All Steel radial tire that provides great durability and stability. Its special antistatic tread compound ensures particular heat resistance and an extended tire life-cycle. PORTMAX PM 90 offers reduced rolling resistance improving fuel economy.

	Tire size	Type	STAR RATING	LI/SS	Version	O.W. (mm)	O.D. (mm)	SLR (mm)	RC (mm)	RIM	
										Rec.	Alt.
Ø 25"	18.00 R 25	TL	***	207 A5	IND	495	1655	730	5024	13.00/2.5	-
Ø 33"	18.00 R 33	TL	***	214 A5	IND	485	1845	857	5624	13.00/2.50	13.00/2.50 IF

IND: Industrial



Radial



A5



214

Technologies



Special Antistatic Compound

Performance



Stability



Durability



Heat Resistance



Fuel Economy





Radial



PORTMAX PM 93 PLUS

RADIAL PORT TIRES

PORTMAX PM 93 PLUS has been specially designed for straddle carriers in port container handling operations. It is an All Steel radial tire with multilayer steel belts providing a greater stability and durability. Its special antistatic tread compound ensures a particular heat resistance and a longer tire life. PORTMAX PM 93 PLUS offers reduced rolling resistance improving fuel economy.

Technologies



Special Antistatic Compound

Performance



Stability



Durability



Heat Resistance



Fuel Economy



	Tire size	Type	STAR RATING	LI/SS	Version	O.W. (mm)	O.D. (mm)	SLR (mm)	RC (mm)	RIM	
										Rec.	Alt.
Ø 25"	16.00 R 25	TL	**	200 A5	IND	425	1515	699	4582	11.25/2.0	-
	450/95 R 25	TL	**	204 A5	IND	425	1515	699	4582	11.25/2.0	13.00/2.0
	480/95 R 25	TL	***	208 A5	IND	470	1555	704	4718	13.00/2.5	-

IND: Industrial





PORTMAX PT 93

RADIAL PORT TIRES

PORTMAX PT 93 is a terminal tractor and trailer tire, which has been specifically engineered for heavy-duty operations in terminal environments such as ports and logistic hubs. The special antistatic tread compound ensures excellent wear and heat resistance even under the most demanding operating conditions. PORTMAX PT 93 offers excellent handling features and outstanding grip along with enhanced durability.

	Tire size	Type	STAR RATING	LI/SS	Version	O.W. (mm)	O.D. (mm)	SLR (mm)	RC (mm)	RIM	
										Rec.	Alt.
Ø 22.5"	280/75 R 22.5	TL	-	168 A8	IND	282	998	-	-	8.25	9.00
	310/80 R 22.5	TL	-	175 A8	IND	308	1070	-	-	9.00	-
	315/60 R 22.5	TL	-	170 A8	IND	307	965	-	-	9.75	9.00

IND: Industrial



Radial



A8



175

Technologies



Special Antistatic Compound

Performance



Durability



Comfort



Heat Resistance





Bias



ROCK STAR IND4

ROCK STAR PORT IND-4 has been specifically designed for empty container handlers and forklifts. In addition to excellent traction, the unique tread compound provides superior cut and chip resistance. ROCK STAR PORT IND-4 ensures outstanding load capacity and extraordinary durability.

Performance



Cut and Chip Resistance



Durability



High Load Capacity



Traction

	Tire size	Type	PR	LI/SS	Version	O.W.	O.D.	SLR	RC	RIM	
						(mm)	(mm)	(mm)	(mm)	Rec.	Alt.
Ø 24"	14.00 - 24	TL	32	-	PORT IND	390	1425	635	4350	10.00 WA	10.00 VA
	14.00 - 24	TT	32	-	PORT IND	390	1425	635	4350	10.00 W	-
	14.00 - 24	TT	32	-	PORT IND	390	1425	635	4350	10.00 WA	10.00 VA
	14.00 - 24	TL	32	-	PORT IND	390	1425	635	4350	10.00 W	-
	14.00 - 24	TT	28	-	PORT IND	390	1425	635	4350	10.00 W	-
	14.00 - 24	TL	28	-	PORT IND	390	1425	635	4350	10.00 W	-
	14.00 - 24	TT	28	-	PORT IND	390	1425	635	4350	10.00 WA	10.00 VA
	14.00 - 24	TL	28	-	PORT IND	390	1425	635	4350	10.00 WA	10.00 VA

PORT IND: Port Industrial





LIFTMAX LM SMOOTH

LIFTMAX LM SMOOTH has been specifically engineered for empty container handlers, but it is also suitable for heavy load lift trucks and forklifts. Its smooth tread pattern provides a uniform weight distribution across the complete contact area and avoids base lug cracking. The unique tread compound ensures excellent wear and a long service life. LIFTMAX LM SMOOTH is perfect for logistics operations on hard surfaces, especially on asphalt. The strong All Steel casing and the reinforced sidewall ensure maximum stability and optimum handling during lift mode. In addition, the radial casing absorbs surface irregularities resulting in improved riding comfort and reduced operator fatigue. Being antistatic-compliant LIFTMAX LM SMOOTH is capable of dissipating static charge from the vehicle.

	Tire size	Type	LI/SS	Version	O.W. (mm)	O.D. (mm)	SLR (mm)	RC (mm)	RIM	
									Rec.	Alt.
Ø 24"	14.00 R 24	TL	193 A5	IND	388	1415	-	-	10.00 W	10.0 ; 10.00 WA

IND: Industrial



Radial



193

Technologies



All Steel



Heavy Duty



Special Antistatic Compound



Strong Casing

Performance



Stability



Comfort



Durability



High Load Capacity





Bias



A5



176



POWER TRAX

POWER TRAX is a premium tire specially designed for heavy duty service on port trailer, empty container handler or ECH and underground mining machineries. Its deep tread and tough casing provide exceptional durability, minimizing the risk of punctures and accidental damage. POWER TRAX is the ideal tire for hard and tough operations, thanks to the unique tread compound which provides excellent resistance to cuts and chip.

Technologies



Heavy Duty



Deep Tread



Strong Casing

Performance



Cut and Chip Resistance



Durability

	Tire size	Type	PR	LI/SS	Version	S.W. (mm)	O.D. (mm)	SLR (mm)	RC (mm)	RIM	
										Rec.	Alt.
Ø 15"	355/65 - 15	TL	24	170 A5	STD	335	830	380	2530	9.75	-
Ø 20"	12.00 - 20	TT	20	176 A5	STD	320	1150	-	-	8.5	9.0

STD: Standard





MULTIMAX SR 261

RADIAL MPT TIRES

MULTIMAX SR 261 is an All Steel radial tire with multi-layer steel belts specially designed for Low Platform Trailer, Agri Trailer and Mobile Harbour Crane in transport applications and port operations. Its strong carcass and special tread compound ensure longer tire life. Thanks to its siped tread design, MULTIMAX SR 261 allows for superior traction in all applications. In addition, the unique 5 RIB tread design maximizes ground contact for even tread wear.

	Tire size	Type	STAR RATING	LI/SS	Version	O.W. (mm)	O.D. (mm)	SLR (mm)	RC (mm)	RIM	
										Rec.	Alt.
Ø 17.5"	215/75 R 17.5	TL	-	135/133 J	STD	210	775	356	2371	6.00	6.75
Ø 19.5"	285/70 R 19.5	TL	-	150/148 J	STD	280	903	412	2779	8.25	7.50 ; 9.00

STD: Standard



Radial



Technologies



All Steel



Strong Casing

Performance



Durability



Traction



Load index

The load index is a code that defines a tire's maximum weight capacity at the speed given by its speed index provided that the usage conditions recommended by the Manufacturer are fully complied with.

Corresponding values of load index (LI) and load capacity per wheel (kg / lbs)

LI	lbs	kg	LI	lbs	kg	LI	lbs	kg	LI	lbs	kg
50	420	190	85	1135	515	120	3085	1400	155	8540	3875
51	430	195	86	1170	530	121	3195	1450	156	8820	4000
52	440	200	87	1200	545	122	3305	1500	157	9095	4125
53	455	206	88	1235	560	123	3415	1550	158	9370	4250
54	465	212	89	1280	580	124	3525	1600	159	9645	4375
55	480	218	90	1325	600	125	3635	1650	160	9920	4500
56	495	224	91	1355	615	126	3750	1700	161	10195	4625
57	505	230	92	1390	630	127	3860	1750	162	10470	4750
58	520	236	93	1435	650	128	3970	1800	163	10745	4875
59	535	243	94	1475	670	129	4080	1850	164	11025	5000
60	550	250	95	1520	690	130	4190	1900	165	11355	5150
61	565	257	96	1565	710	131	4300	1950	166	11685	5300
62	585	265	97	1610	730	132	4410	2000	167	12015	5450
63	600	272	98	1655	750	133	4540	2060	168	12345	5600
64	615	280	99	1710	775	134	4675	2120	169	12785	5800
65	640	290	100	1765	800	135	4805	2180	170	13225	6000
66	660	300	101	1820	825	136	4940	2240	171	13560	6150
67	675	307	102	1875	850	137	5070	2300	172	13890	6300
68	695	315	103	1930	875	138	5205	2360	173	14330	6500
69	715	325	104	1985	900	139	5355	2430	174	14770	6700
70	740	335	105	2040	925	140	5510	2500	175	15210	6900
71	760	345	106	2095	950	141	5675	2575	176	15650	7100
72	785	355	107	2150	975	142	5840	2650	177	16095	7300
73	805	365	108	2205	1000	143	6005	2725	178	16535	7500
74	825	375	109	2270	1030	144	6175	2800	179	17085	7750
75	855	387	110	2335	1060	145	6395	2900	180	17635	8000
76	880	400	111	2405	1090	146	6615	3000	181	18185	8250
77	910	412	112	2470	1120	147	6780	3075	182	18740	8500
78	935	425	113	2535	1150	148	6945	3150	183	19290	8750
79	965	437	114	2600	1180	149	7165	3250	184	19840	9000
80	990	450	115	2680	1215	150	7385	3350	185	20390	9250
81	1020	462	116	2755	1250	151	7605	3450	186	20945	9500
82	1045	475	117	2835	1285	152	7825	3550	187	21495	9750
83	1075	487	118	2910	1320	153	8045	3650	188	22045	10000
84	1100	500	119	3000	1360	154	8265	3750	189	22705	10300

LI	lbs	kg	LI	lbs	kg	LI	lbs	kg
190	23370	10600	200	30865	14000	210	41885	19000
191	24030	10900	201	31965	14500	211	42990	19500
192	24690	11200	202	33070	15000	212	44090	20000
193	25350	11500	203	34170	15500	213	45415	20600
194	26015	11800	204	35270	16000	214	46735	21200
195	26785	12150	205	36375	16500	215	48060	21800
196	27555	12500	206	37475	17000	216	49380	22400
197	28330	12850	207	38580	17500	217	50705	23000
198	29100	13200	208	39680	18000	218	52025	23600
199	29980	13600	209	40785	18500	219	53570	24300

Speed index

The speed index is a value that indicates the maximum admitted speed at which the tire can carry the weight corresponding to its load index provided that the usage conditions recommended by the Manufacturer are fully complied with.

Speed index	A2	A4	A6	A8	B	C	D	E	F	G	J	K
km/h	10	20	30	40	50	60	65	70	80	90	100	110
mph	5	10	20	25	30	35	40	45	50	55	62	68



Corporate Office

Balkrishna Industries Ltd.

BKT HOUSE, C/15, Trade World, Kamala Mills Compound, Senapati Bapat Marg, Lower Parel, Mumbai - 400013, India
Tel: (+91) 22-6666 3800 - Fax: (+91) 22-6666 3898/99 - e-mail: info@bkt-tires.com - bkt-tires.com

BKT Europe srl

Viale Della Repubblica, 133
20831 Seregno (MB), Italy
Tel: (+39) 0362 33 03 28
(+39) 0362 32 51 07
Fax: (+39) 0362 23 24 72

BKT USA Inc.

202 Montrose West Ave. Suite 240
Copley, Ohio 44321
Office: (+1) 330 836 1090
Fax: (+1) 330 836 1091

BKT Tires (CANADA) Inc.

55 York Street, Suite 401
Toronto, Ontario M5J 1R7, Canada
Tel: AG/IND (+1) 514 792 9220
OTR (+1) 780 888 5667
Fax: (+1) 416 229 1711



bkt-tires.com