

# BKT

GROWING TOGETHER

# ATV

LAWN & GARDEN / ALL TERRAIN SPORT TIRES





GROWING TOGETHER

## LAWN & GARDEN /

Whether you love competitive sport or traveling through natural landscapes, BKT has the right tire for your ATV. We design and build tires that are able to withstand all stress ATVs are continuously subject to especially under extreme conditions while riding over dry grounds or mud on tortuous paths, or rocky surfaces. In short: no matter which challenge you are going to face, BKT is by your side ensuring safety, performance, and great fun.



*Radial*

Radial tires have steel cords that are arranged running radially from bead to bead around the tire. Sidewall and tread have independent functional features providing more flexibility, great performance, durability, and fuel economy.



*Bias*

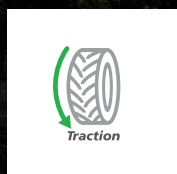
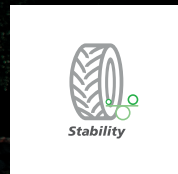
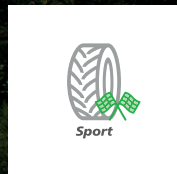
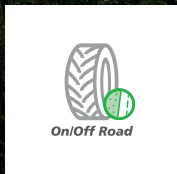
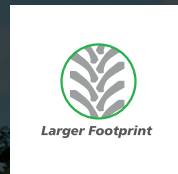
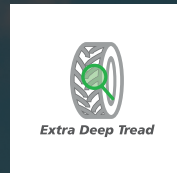
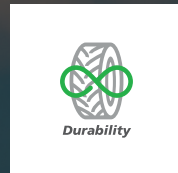
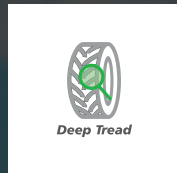
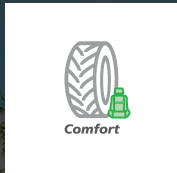
Bias tires have cord plies that are arranged running diagonally from bead to bead across the tire. Layers overlap forming a crisscross pattern. This design features extraordinary sidewall resistance and puncture resistance.



ALL TERRAIN SPORT TIRES

# ATV

## TECHNOLOGIES AND PERFORMANCE



# ATV TIRES



**W 207**



[ p. 6 ]



**AT 108**



[ p. 9 ]



**AT 109**



[ p. 11 ]



**AT 110**



[ p. 12 ]



**AT 111**



[ p. 13 ]



**AT 111 HD**



[ p. 15 ]





**AT 112**



[ p. 16 ]



**AT 119**



[ p. 17 ]



**AT 171**



[ p. 18 ]



**BOGMAX**



[ p. 19 ]



**SIERRA MAX**



[ p. 20 ]



**SIERRA MAX PRO**



[ p. 21 ]





Bias



# W 207

W 207 is BKT's ATV tire for all-terrain sports. Thanks to M+S technology and a special design, it provides the best traction in any condition. This tire features an excellent puncture resistance over challenging terrains.

### Technologies



M+S

### Performance



Sport





Traction

	Tire size	RIM		S.W. (mm)	O.D. (mm)	SLR (mm)	RC (mm)	Version	PR	Type	LI/SS
		Rec.	Alt.								
<b>Ø 8"</b>	<b>AT 22 X 11 - 8</b>	9.0AT	8.5 AT	272	561	-	-	STD	6	TL	-
<b>Ø 9"</b>	<b>AT 22 X 11 - 9</b>	9.0AT	8.5 AT	272	561	-	-	STD	6	TL	-
	<b>AT 25 X 12 - 9</b>	9.5AT	9.0 AT ; 10.0 AT	300	632	-	-	STD	6	TL	-
	<b>AT 25 X 13 - 9</b>	10.5AT	10.0 AT	330	635	-	-	STD	6	TL	-
<b>Ø 10"</b>	<b>AT 22 X 7 - 10</b>	5.5AT	6.0 AT	178	559	-	-	STD	6	TL	-
	<b>AT 22 X 8 - 10</b>	6.5AT	6.0 AT	203	559	-	-	STD	6	TL	-
	<b>AT 22 X 11 - 10</b>	9.0AT	8.5 AT	272	561	-	-	STD	6	TL	-
	<b>AT 23 X 7 - 10</b>	5.5AT	6.0 AT	177	584	-	-	STD	6	TL	-
	<b>AT 23 X 8 - 10</b>	6.5AT	6.0 AT	203	589	-	-	STD	6	TL	-
	<b>AT 23 X 10 - 10</b>	8.0AT	7.5 AT ; 8.5 AT	249	587	-	-	STD	6	TL	-
	<b>AT 24 X 11 - 10</b>	9.0AT	8.5 AT	279	610	-	-	STD	6	TL	-
	<b>AT 25 X 11 - 10</b>	9.0AT	8.5 AT	285	640	-	-	STD	6	TL	-
	<b>AT 25 X 12 - 10</b>	9.5AT	9.0 AT ; 10.0 AT	297	640	-	-	STD	6	TL	-

STD: Standard



	Tire size	RIM		S.W. (mm)	O.D. (mm)	SLR (mm)	RC (mm)	Version	PR	Type	LI/SS
		Rec.	Alt.								
											
Ø 11"	AT 23 X 8 - 11	6.5 AT	6.0 AT	203	584	-	-	STD	6	TL	-
	AT 24 X 8 - 11	6.5 AT	6.0 AT	203	612	-	-	STD	6	TL	-
	AT 24 X 9 - 11	7.0 AT	7.5 AT	226	610	-	-	STD	6	TL	-
	AT 24 X 10 - 11	8.0 AT	7.5 AT ; 8.5 AT	249	612	-	-	STD	6	TL	-
	AT 25 X 8 - 11	6.5 AT	6.0 AT	203	638	-	-	STD	6	TL	-
	AT 25 X 10 - 11	8.0 AT	7.5 AT ; 8.5 AT	249	638	-	-	STD	6	TL	-
Ø 12"	AT 24 X 8 - 12	6.5 AT	6.0 AT	198	615	-	-	STD	6	TL	-
	AT 25 X 8 - 12	6.5 AT	6.0 AT	198	638	-	-	STD	6	TL	-
	AT 25 X 10 - 12	8.0 AT	6.5 AT ; 7.5 AT ; 8.5 AT	249	638	-	-	STD	6	TL	-
	AT 25 X 11 - 12	9.0 AT	8.5 AT	284	638	-	-	STD	6	TL	-
	AT 26 X 8 - 12	6.50 AT	6.00 AT	204	660	-	-	STD	6	TL	-
	AT 26 X 10 - 12	8.0 AT	7.5 AT ; 8.5 AT	241	658	-	-	STD	6	TL	-
	AT 26 X 12 - 12	9.5 AT	8.0 AT ; 8.5 AT ; 9.0 AT	299	658	-	-	STD	6	TL	-
	AT 27 X 10 - 12	8.0 AT	7.5 AT ; 8.5 AT	241	683	-	-	STD	6	TL	-

STD: Standard





Bias



# W 207

W 207 is BKT's ATV tire for all-terrain sports. Thanks to M+S technology and a special design, it provides the best traction in any condition. This tire features an excellent puncture resistance over challenging terrains.

### Technologies



M+S

### Performance



Sport



Traction

	Tire size	RIM		S.W. (mm)	O.D. (mm)	SLR (mm)	RC (mm)	Version	PR	Type	LI/SS
		Rec.	Alt.								
Ø 12"	AT 27 X 12 - 12	9.5 AT	8.5 AT ; 9.0 AT	299	683	-	-	STD	6	TL	-
	AT 28 X 10 - 12	8.0 AT	7.5 AT ; 8.5 AT	241	706	-	-	STD	6	TL	-
	AT 28 X 12 - 12	9.5 AT	8.5 AT ; 9.0 AT	299	706	-	-	STD	6	TL	-

STD: Standard





# AT 108

AT 108 is an all-terrain tire suitable for ATVs. Its tread design provides excellent comfort and performance on-and-off the road.



	Tire size	RIM		S.W. (mm)	O.D. (mm)	SLR (mm)	RC (mm)	Version	PR	Type	LI/SS
		Rec.	Alt.								
Ø 8"	AT 20 X 7 - 8	5.5 AT	6.0 AT	170	508	-	-	STD	4	TL	-
	AT 22 X 11 - 8	9.0 AT	8.5 AT	277	560	-	-	STD	4	TL	-
Ø 9"	AT 22 X 10 - 9	8.0 AT	7.5 AT; 8.5 AT	254	559	-	-	STD	4	TL	-
	AT 22 X 11 - 9	9.0 AT	8.5 AT	275	557	-	-	STD	4	TL	-
	AT 22 X 11 - 9	9.0 AT	8.5 AT	275	557	-	-	STD	6	TL	-
	AT 25 X 12 - 9	9.5 AT	9.0 AT; 10.0 AT	292	640	-	-	STD	4	TL	-
	AT 25 X 13 - 9	10.5 AT	10.0 AT	320	635	-	-	STD	4	TL	-
	AT 25 X 13 - 9	10.5 AT	10.0 AT	320	635	-	-	STD	6	TL	-
Ø 10"	AT 20 X 10 - 10	8.0 AT	7.5 AT; 8.5 AT	250	514	235	1426	STD	4	TL	-
	AT 20 X 10 - 10	8.0 AT	7.5 AT; 8.5 AT	250	514	235	1526	STD	8	TL	-
	AT 22 X 8 - 10	6.5 AT	6.0 AT	206	557	-	-	STD	4	TL	-
	AT 22 X 8 - 10	6.5 AT	6.0 AT	206	557	-	-	STD	6	TL	-
	AT 22 X 11 - 10	9.0 AT	8.5 AT	270	564	-	-	STD	4	TL	-
	AT 22 X 11 - 10	9.0 AT	8.5 AT	270	564	-	-	STD	6	TL	-
	AT 23 X 8 - 10	6.5 AT	6.0 AT	210	594	-	-	STD	4	TL	-

STD: Standard

## Performance





Bias



# AT 108

AT 108 is an all-terrain tire suitable for ATVs. Its tread design provides excellent comfort and performance on-and-off the road.

## Performance



Comfort



On/Off Road

	Tire size	RIM		S.W. (mm)	O.D. (mm)	SLR (mm)	RC (mm)	Version	PR	Type	LI/SS
		Rec.	Alt.								
Ø 10"	AT 23 X 10 - 10	8.0 AT	7.5 AT ; 8.5 AT	259	594	-	-	STD	4	TL	-
	AT 24 X 11 - 10	9.0 AT	8.5 AT	284	608	-	-	STD	4	TL	-
	AT 24 X 11 - 10	9.0	8.5 AT	284	608	-	-	STD	6	TL	-
	AT 25 X 12 - 10	9.5 AT	9.0 AT ; 10.0 AT	298	630	-	-	STD	4	TL	-
	AT 25 X 12 - 10	9.5 AT	9.0 AT ; 10.0 AT	298	630	-	-	STD	6	TL	-
Ø 11"	AT 22 X 7 - 11	5.5 AT	-	181	557	-	-	STD	4	TL	-
	AT 23 X 8 - 11	6.5 AT	6.0 AT	191	594	-	-	STD	4	TL	-
	AT 23 X 8 - 11	6.5 AT	6.0 AT	191	594	-	-	STD	6	TL	-
	AT 24 X 8 - 11	6.5 AT	6.0 AT	206	610	-	-	STD	4	TL	-
	AT 24 X 9 - 11	7.0 AT	7.5 AT	220	605	-	-	STD	4	TL	-
	AT 24 X 9 - 11	7.0 AT	7.5 AT	220	605	-	-	STD	6	TL	-
	AT 24 X 10 - 11	8.0 AT	7.5 AT ; 8.5 AT	254	615	-	-	STD	4	TL	-
Ø 12"	AT 25 X 8 - 12	6.5 AT	6.0 AT	212	630	-	-	STD	4	TL	-
	AT 25 X 8 - 12	6.5 AT	6.0 AT	212	630	-	-	STD	6	TL	-
	AT 25 X 10 - 12	8.0 AT	6.5 AT ; 7.5 AT ; 8.5 AT	254	640	-	-	STD	4	TL	-
	AT 25 X 10 - 12	8.0 AT	6.5 AT ; 7.5 AT ; 8.5 AT	254	640	-	-	STD	6	TL	-

STD: Standard



# AT 109

AT 109 is an all-terrain tire for ATVs. Its tread design provides excellent field protection.



Performance



Field Protection

	Tire size	RIM		S.W. (mm)	O.D. (mm)	SLR (mm)	RC (mm)	Version	PR	Type	LI/SS
		Rec.	Alt.								
Ø 6"	AT 145/70 - 6	4.5	-	137	366	-	-	STD	2	TL	-
Ø 7"	AT 16 X 8 - 7	6.5 AT	6.0 AT	183	419	-	-	STD	2	TL	-
Ø 8"	AT 18 X 9.5 - 8	7.5 AT	8.0 AT	220	468	-	-	STD	2	TL	-
	AT 20 X 7 - 8	5.5 AT	6.0 AT	170	504	-	-	STD	2	TL	-
	AT 21 X 9 - 8	7.0 AT	6.5 AT; 7.5 AT	222	536	-	-	STD	2	TL	-
	AT 22 X 11 - 8	9.0 AT	8.5 AT	230	579	-	-	STD	2	TL	-
Ø 9"	AT 25 X 12 - 9	9.5 AT	9.0 AT; 10.0 AT	269	617	-	-	STD	2	TL	-

STD: Standard





Bias



# AT 110

AT 110 is BKT's tire suitable for all-terrain applications with ATVs. Thanks to its extraordinary steering control, AT 110 is the ideal front axle tire for your vehicle.

## Performance



Steering Control

	Tire size	RIM		S.W. (mm)	O.D. (mm)	SLR (mm)	RC (mm)	Version	PR	Type	LI/SS
		Rec.	Alt.								
Ø 8"	AT 20 X 7 - 8	5.5AT	6.0AT	183	508	-	-	STD	4	TL	-
Ø 9"	AT 21 X 8 - 9	6.5AT	6.0AT	204	541	-	-	STD	4	TL	-
Ø 10"	AT 21 X 7 - 10	5.5AT	6.0AT	178	531	-	-	STD	4	TL	-
	AT 22 X 8 - 10	6.5AT	6.0AT	204	548	-	-	STD	4	TL	-
	AT 23 X 7 - 10	5.5AT	6.0AT	178	584	-	-	STD	4	TL	-

STD: Standard





# AT 111



AT 111 is suitable for all-terrain sport racing with ATVs. An "HD" version with a deep tread is available for users who need improved durability and traction.



Bias

Performance



	Tire size	RIM		S.W. (mm)	O.D. (mm)	SLR (mm)	RC (mm)	Version	PR	Type	LI/SS
		Rec.	Alt.								
											
Ø 8"	AT 18 X 10 - 8	8.0 AT	7.5 AT; 8.5 AT	254	457	-	-	STD	2	TL	-
	AT 18 X 10 - 8	8.0 AT	7.5 AT; 8.5 AT	254	457	-	-	STD	4	TL	-
	AT 20 X 11 - 8	9.0 AT	8.5 AT	282	508	-	-	STD	6	TL	-
	AT 22 X 11 - 8	9.0 AT	8.5 AT	282	559	-	-	STD	6	TL	-
Ø 9"	AT 18 X 10 - 9	8.0 AT	7.5 AT; 8.5 AT	254	457	-	-	STD	4	TL	-
	AT 20 X 11 - 9	9.0 AT	8.5 AT	279	508	-	-	STD	4	TL	-
	AT 20 X 11 - 9	9.0 AT	8.5 AT	279	508	-	-	STD	6	TL	-
	AT 22 X 11 - 9	9.0 AT	8.5 AT	282	559	-	-	STD	4	TL	-
	AT 22 X 11 - 9	9.0 AT	8.5 AT	282	559	-	-	STD	6	TL	-
Ø 10"	AT 18 X 10 - 10	8.0 AT	7.5 AT; 8.5 AT	254	457	-	-	STD	4	TL	-
	AT 19 X 6 - 10	5.0	-	152	472	-	-	STD	4	TL	-
	AT 20 X 6 - 10	5.0	-	152	500	-	-	STD	2	TL	-
	AT 20 X 6 - 10	5.0	-	152	500	-	-	STD	4	TL	-
	AT 20 X 11 - 10	9.0 AT	8.5 AT	275	508	-	-	STD	6	TL	-

STD: Standard





Bias



# AT 111

AT 111 is suitable for all-terrain sport racing with ATVs. An "HD" version with a deep tread is available for users who need improved durability and traction.

### Performance



Sport

	Tire size	RIM		S.W. (mm)	O.D. (mm)	SLR (mm)	RC (mm)	Version	PR	Type	LI/SS
		Rec.	Alt.								
Ø 10"	AT 21 X 7 - 10	5.5 AT	6.0 AT	178	541	-	-	STD	4	TL	-
	AT 21 X 7 - 10	5.5 AT	6.0 AT	178	541	-	-	STD	6	TL	-
	AT 22 X 7 - 10	5.5 AT	6.0 AT	175	559	-	-	STD	4	TL	-
	AT 22 X 7 - 10	5.5 AT	6.0 AT	175	559	-	-	STD	6	TL	-
	AT 22 X 8 - 10	6.5 AT	6.0 AT	208	559	-	-	STD	6	TL	-
	AT 22 X 11 - 10	9.0 AT	8.5 AT	282	559	-	-	STD	4	TL	-
	AT 22 X 11 - 10	9.0 AT	8.5 AT	282	559	-	-	STD	6	TL	-
	AT 23 X 7 - 10	5.5 AT	6.0 AT	178	584	-	-	STD	4	TL	-
	AT 23 X 7 - 10	5.5 AT	6.0 AT	178	584	-	-	STD	6	TL	-

STD: Standard





# AT 111 HD

AT 111 HD is suitable for all-terrain sport racing with ATVs. The increased tread depth and the thick sidewall provide extra grip and braking control in addition to extraordinary traction and high-speed control in power slides. AT 111 HD ensures an extended tire life-cycle.

	Tire size	RIM		S.W. (mm)	O.D. (mm)	SLR (mm)	RC (mm)	Version	PR	Type	LI/SS
		Rec.	Alt.								
Ø 9"	AT 20 X 11 - 9	9.0 AT	8.5 AT	275	515	-	-	STD	6	TL	43 J
	AT 22 X 11 - 9	9.0 AT	8.5 AT	279	560	-	-	STD	6	TL	-
Ø 10"	AT 20 X 11 - 10	9.0 AT	8.5 AT	279	505	-	-	STD	6	TL	-
	AT 21 X 7 - 10	5.5 AT	6.0 AT	178	533	-	-	STD	6	TL	30 J
	AT 22 X 11 - 10	9.0 AT	8.5 AT	279	560	-	-	STD	6	TL	-
	AT 22 X 7 - 10	5.5 AT	6.0 AT	174	560	-	-	STD	6	TL	-
	AT 23 X 7 - 10	5.5 AT	6.0 AT	174	585	-	-	STD	6	TL	-

STD: Standard



Bias



43

## Technologies



Extra Deep Tread

## Performance



Sport



Durability



Traction





Bias



# AT 112

AT 112 is an all-terrain tire for ATVs. It is particularly suitable for sport performance.

### Performance



Sport

	Tire size	RIM		S.W. (mm)	O.D. (mm)	SLR (mm)	RC (mm)	Version	PR	Type	LI/SS
		Rec.	Alt.								
											
Ø 8"	AT 20 X 10 - 8	8.0 AT	7.5 AT; 8.5 AT	240	510	-	-	STD	4	TL	-
Ø 10"	AT 20 X 10 - 10	8.0 AT	7.5 AT; 8.5 AT	240	510	-	-	STD	4	TL	-
Ø 12"	AT 23 X 10 - 12	8.0 AT	7.5 AT; 8.5 AT	240	585	-	-	STD	4	TL	-

STD: Standard







# AT 119

AT 119 is suitable for both all-terrain and lawn and garden applications with mowers. Its tread design provides excellent field protection.



	Tire size	RIM		S.W. (mm)	O.D. (mm)	SLR (mm)	RC (mm)	Version	PR	Type	LI/SS
		Rec.	Alt.								
											
Ø 8"	AT 22 X 11 - 8	9.0 AT	8.5 AT	280	580	-	-	STD	2	TL	-
	AT 22 X 11 - 8	9.0 AT	8.5 AT	280	580	-	-	STD	4	TL	-

STD: Standard

## Performance



Field Protection





Bias



Performance



# AT 171

AT 171 has been specifically designed for mud bogger tractors. The special directional and extra-deep tread design provides excellent traction on wet and muddy surfaces.



	Tire size	RIM		S.W. (mm)	O.D. (mm)	SLR (mm)	RC (mm)	Version	PR	Type	LI/SS
		Rec.	Alt.								
Ø 14"	28 X 9 - 14	W 7	W 6	205	715	-	-	STD	6	TL	77 A8 / 53 F
	30 X 9 - 14	W 7	W 6	211	755	-	-	STD	6	TL	77 A8 / 53 F
Ø 16"	31 X 9 - 16	W 7	W 6	211	785	-	-	STD	6	TL	80 A8 / 56 F
Ø 18"	33 X 8 - 18	W 6	W 5.5	200	845	390	2525	STD	6	TL	83 A8 / 59 F
	35 X 10 - 18	W 8	-	241	900	417	2646	STD	8	TT	90 A8 / 66 F
	35 X 10 - 18	W 8	-	241	900	417	2646	STD	8	TL	90 A8 / 66 F
Ø 20"	33 X 9 - 20	W 7	W 6	205	838	387	2616	STD	6	TL	85 A8 / 61 F
	35 X 9 - 20	W 7	W 6	200	895	419	2670	STD	6	TT	85 A8 / 61 F
	35 X 9 - 20	W 7	W 6	200	895	419	2670	STD	6	TL	85 A8 / 61 F
	38 X 10 - 20	W 8	W 7	235	950	442	2835	STD	6	TT	93 A8 / 69 F
	38 X 10 - 20	W 8	W 7	235	950	442	2835	STD	6	TL	93 A8 / 69 F
Ø 22"	35 X 9 - 22	W 7	W 6	210	890	-	-	STD	6	TL	88 A8 / 64 F
	37 X 9 - 22	W 7	W 6	205	945	444	2778	STD	8	TT	88 A8 / 64 F
	37 X 9 - 22	W 7	W 6	205	945	444	2778	STD	8	TL	88 A8 / 64 F
	40 X 10 - 22	W 8	W 7	235	1005	469	2955	STD	8	TT	95 A8 / 71 F
	40 X 10 - 22	W 8	W 7	235	1005	469	2955	STD	8	TL	95 A8 / 71 F
Ø 24"	40 X 9 - 24	W 7	W 6	211	995	462	3112	STD	8	TL	90 A8 / 66 F

STD: Standard



# BOGMAX

BOGMAX has been specially designed for all-terrain applications. The very deep tread pattern ensures excellent traction whereas the sidewall protectors reduce impacts and possible damages. BOGMAX is a 6-ply-rated tire with M+S technology - perfect for sport performance in every condition.

	Tire size	RIM		S.W. (mm)	O.D. (mm)	SLR (mm)	RC (mm)	Version	PR	Type	LI/SS
		Rec.	Alt.								
											
<b>Ø 14"</b>	<b>AT 30 X 10 - 14</b>	7.0 AT	7.5 AT; 8.0 AT	260	760	-	-	STD	6	TL	58 F
	<b>AT 32 X 10 - 14</b>	8.0 AT	8.5 AT	250	810	-	-	STD	6	TL	62 F

STD: Standard



Bias



F



62

## Technologies



Deep Tread



M+S

## Performance



Sport



Traction



Radial



# SIERRA MAX

ATV & GO KART TIRES

SIERRA MAX is the BKT tire for both all-terrain and lawn and garden applications. Its radial construction provides a significantly smoother and more comfortable ride over extreme terrains such as deserts, or dirty and rocky surfaces. The special tread design along with its wider footprint provides outstanding forward and lateral traction.

### Technologies



M+S

### Performance



Comfort



Sport



Traction

	Tire size	LI/SS	RIM		S.W. (mm)	O.D. (mm)	SLR (mm)	RC (mm)	SRI (index)	Version
			Rec.	Alt.						
Ø 12"	AT 25 X 8 R 12	43 N	6.5	-	206	640	292	1899	-	STD
	AT 25 X 10 R 12	50 N	8.0	-	260	640	294	1923	-	STD
	AT 26 X 9 R 12	49 N	7.0	-	230	660	304	2009	-	STD
	AT 26 X 10 R 12	52 N	8.0	-	260	660	306	2006	-	STD
	AT 26 X 11 R 12	55 N	9.0	-	280	660	301	1994	-	STD
	AT 26 X 12 R 12	58 N	9.5	-	305	660	303	1998	-	STD
Ø 14"	AT 26 X 9 R 14	48 N	7.00	-	230	675	307	2005	-	STD
	AT 26 X 11 R 14	54 N	9.00	-	280	675	310	2027	-	STD
	AT 27 X 9 R 14	50 N	7.00	-	230	700	316	2070	-	STD
	AT 27 X 11 R 14	56 N	9.00	-	280	700	318	2091	-	STD



STD: Standard



# SIERRA MAX PRO

ATV & GO KART TIRES

SIERRA MAX PRO is the perfect BKT tire for all-terrain vehicles in ATV applications, also including side-by-side racing. Its radial construction and special wider footprint area provide a smoother ride and an optimized lateral as well as forward traction. Special sturdy lugs have been studied specifically to provide excellent traction and firm grip on the terrain. These features ensure an extraordinarily comfortable ride providing safety and driving control. SIERRA MAX PRO provides excellent performance on every kind of terrain, from hardpack terrains to loose soils.

	Tire size	LI/SS	RIM		S.W. (mm)	O.D. (mm)	SLR (mm)	RC (mm)	SRI (index)	Version
			Rec.	Alt.						
										
Ø 12"	AT 25 X 8 R 12	43 N	6.5	-	200	630	287	1860	-	STD
Ø 14"	AT 27 X 11 R 14	56 N	9.00	-	285	708	336	2145	-	STD

STD: Standard



Radial



### Technologies



Larger Footprint

### Performance



Handling and Comfort



Traction



Stability



Steering Control



# Load index

The load index is a code that defines a tire's maximum weight capacity at the speed given by its speed index provided that the usage conditions recommended by the Manufacturer are fully complied with.

## Corresponding values of load index (LI) and load capacity per wheel (kg / lbs)

LI	lbs	kg	LI	lbs	kg	LI	lbs	kg	LI	lbs	kg
50	420	190	85	1135	515	120	3085	1400	155	8540	3875
51	430	195	86	1170	530	121	3195	1450	156	8820	4000
52	440	200	87	1200	545	122	3305	1500	157	9095	4125
53	455	206	88	1235	560	123	3415	1550	158	9370	4250
54	465	212	89	1280	580	124	3525	1600	159	9645	4375
55	480	218	90	1325	600	125	3635	1650	160	9920	4500
56	495	224	91	1355	615	126	3750	1700	161	10195	4625
57	505	230	92	1390	630	127	3860	1750	162	10470	4750
58	520	236	93	1435	650	128	3970	1800	163	10745	4875
59	535	243	94	1475	670	129	4080	1850	164	11025	5000
60	550	250	95	1520	690	130	4190	1900	165	11355	5150
61	565	257	96	1565	710	131	4300	1950	166	11685	5300
62	585	265	97	1610	730	132	4410	2000	167	12015	5450
63	600	272	98	1655	750	133	4540	2060	168	12345	5600
64	615	280	99	1710	775	134	4675	2120	169	12785	5800
65	640	290	100	1765	800	135	4805	2180	170	13225	6000
66	660	300	101	1820	825	136	4940	2240	171	13560	6150
67	675	307	102	1875	850	137	5070	2300	172	13890	6300
68	695	315	103	1930	875	138	5205	2360	173	14330	6500
69	715	325	104	1985	900	139	5355	2430	174	14770	6700
70	740	335	105	2040	925	140	5510	2500	175	15210	6900
71	760	345	106	2095	950	141	5675	2575	176	15650	7100
72	785	355	107	2150	975	142	5840	2650	177	16095	7300
73	805	365	108	2205	1000	143	6005	2725	178	16535	7500
74	825	375	109	2270	1030	144	6175	2800	179	17085	7750
75	855	387	110	2335	1060	145	6395	2900	180	17635	8000
76	880	400	111	2405	1090	146	6615	3000	181	18185	8250
77	910	412	112	2470	1120	147	6780	3075	182	18740	8500
78	935	425	113	2535	1150	148	6945	3150	183	19290	8750
79	965	437	114	2600	1180	149	7165	3250	184	19840	9000
80	990	450	115	2680	1215	150	7385	3350	185	20390	9250
81	1020	462	116	2755	1250	151	7605	3450	186	20945	9500
82	1045	475	117	2835	1285	152	7825	3550	187	21495	9750
83	1075	487	118	2910	1320	153	8045	3650	188	22045	10000
84	1100	500	119	3000	1360	154	8265	3750	189	22705	10300

LI	lbs	kg	LI	lbs	kg	LI	lbs	kg
190	23370	10600	200	30865	14000	210	41885	19000
191	24030	10900	201	31965	14500	211	42990	19500
192	24690	11200	202	33070	15000	212	44090	20000
193	25350	11500	203	34170	15500	213	45415	20600
194	26015	11800	204	35270	16000	214	46735	21200
195	26785	12150	205	36375	16500	215	48060	21800
196	27555	12500	206	37475	17000	216	49380	22400
197	28330	12850	207	38580	17500	217	50705	23000
198	29100	13200	208	39680	18000	218	52025	23600
199	29980	13600	209	40785	18500	219	53570	24300

## Speed index

The speed index is a value that indicates the maximum admitted speed at which the tire can carry the weight corresponding to its load index provided that the usage conditions recommended by the Manufacturer are fully complied with.

Speed index	A2	A4	A6	A8	B	C	D	E	F	G	J	K
km/h	10	20	30	40	50	60	65	70	80	90	100	110
mph	5	10	20	25	30	35	40	45	50	55	62	68











## Corporate Office

**Balkrishna Industries Ltd.**

BKT HOUSE, C/15, Trade World, Kamala Mills Compound, Senapati Bapat Marg, Lower Parel, Mumbai - 400013, India  
Tel: (+91) 22-6666 3800 - Fax: (+91) 22-6666 3898/99 - e-mail: info@bkt-tires.com - bkt-tires.com

### **BKT Europe srl**

Viale Della Repubblica, 133  
20831 Seregno (MB), Italy  
Tel: (+39) 0362 33 03 28  
(+39) 0362 32 51 07  
Fax: (+39) 0362 23 24 72

### **BKT USA Inc.**

202 Montrose West Ave. Suite 240  
Copley, Ohio 44321  
Office: (+1) 330 836 1090  
Fax: (+1) 330 836 1091

### **BKT Tires (CANADA) Inc.**

55 York Street, Suite 401  
Toronto, Ontario M5J 1R7, Canada  
Tel: AG/IND (+1) 514 792 9220  
OTR (+1) 780 888 5667  
Fax: (+1) 416 229 1711



**bkt-tires.com**